

SELMER

The image features the word "SELMER" in a bold, white, sans-serif font centered on a dark blue background. The letter "L" is uniquely stylized, with a red graphic element that resembles a person sitting on the top bar of the letter, extending downwards and to the right.

future works





Future Works is the force that drives us to shape the future of work and working environments.

If you do not understand how work and working environments are changing, you cannot help to shape what work will look like in the future. We want to harness this force and open up new spaces.

In our heads – with new ways of thinking about specific propositions.
And to inspire – with perspectives that show what we can achieve tomorrow.

So, let's get to work. We look forward to talking to you.

B E C O M E I N S P I R E D

A CULTURAL SHIFT
IN THE WORLD OF WORK

from company to community

Any company wanting to respond to fast-moving markets and real-time demands will need to connect people and teams together.

The outcome:

- To keep up with this pace, companies must realise their full potential, capitalise on their knowledge and uncover synergies.
- This requires the right spaces for cross-departmental meetings and discussions.
- Agile and inviting office landscapes with a high level of utilisation open doors.
- This is where contacts are formed and ideas are created.

A CULTURAL SHIFT IN THE WORLD OF WORK

the future works as a team

delight-work





The cafeteria of the future.

- Invigorates the body: A tasty, balanced menu promotes health and productivity.
- Fortifies the mind: Plants, biophilic design, and natural materials and lighting concepts have a regenerative effect.
- Strengthens the community spirit: Different seating options in a flexible arrangement (bar, bistro, lounge) bring people together in a relaxed setting.





FROM COMPANY
TO COMMUNITY

ERY DELIGHTS FRESH FOOD BREAKFAST COFFEE





OD BREAKFAST

Our solutions.

- Flexible, lightweight and stackable products that can be easily switched.
- Cosy, welcoming design.
- Easy-to-clean materials.



A STRUCTURAL SHIFT
IN THE WORLD OF WORK

from status quo to status go

In future, companies will need to be more adaptive and understand that to develop is to be in a state of continuous change.

- It's a matter of learning new things, trying them out and integrating them into processes, products, business models and ways of working in a systematic way.
- New possibilities. New expectations. For example, the digital transformation – independence of place.
- Requirement 1:
Openness, ability to adapt, flexibility on all sides – company and employees.
- Requirement 2:
Creating conditions for agile working practices.

A STRUCTURAL SHIFT IN THE WORLD OF WORK

the future works through transformation

lab-work



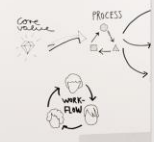


Agile workshops of the future.

- Functionality, adaptability and changeability are at the forefront.
- Modular, non-static building elements – from large event halls to small units, the possibilities are endless.
- Agile, speedy tech rooms with a clean, graphic atmosphere encourage new ideas.



brunner ::
The future works through transformation







Activity
Activity



FROM
STATUS
TO STATUS



FROM
STATUS QUO
TO STATUS GO

Our solutions.

- Furniture with versatile uses.
- Mobile, flexible furniture with casters and/or height adjustment for fast and functional conversion.
- Electrified tables and boards you can write on.



A CULTURAL SHIFT
IN THE WORLD OF WORK

from address to attitude

Nowadays we no longer measure office spaces by the square foot or rate them by location.

- Corporate culture and identity come to the fore.
- Every company has its own individual corporate culture.
- The company's values and attitude shape the employees' sense of identity and belonging.
- The corporate culture must be apparent in the company space.

A CULTURAL SHIFT IN THE WORLD OF WORK

the future works with culture

brain-work





Meetings of the future.

- Meeting rooms are the focus of intensive discussions – formal and informal.
- Ultimate thinking spaces zero in on communication – supported by futuristic technology such as glass screens and hologram displays.
- They provide space for focused collaboration and clear decision-making.



FROM ADDRESS TO ATTITUDE





Our solutions.

- Comfortable seating – even for longer meetings – thanks to ergonomic zones, adapted upholstery and possibilities of movement while sitting.
- Custom table configurations with matching electrification.



A CULTURAL SHIFT
IN THE WORLD OF WORK

from walls to horizons

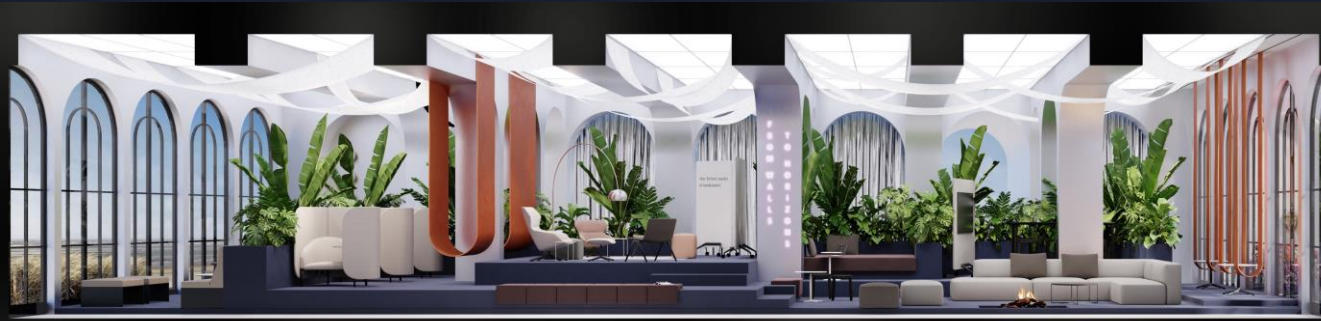
For decades, the standard in office design has been for spaces that are rigidly divided into different cells and areas – but this is now on its way out.

- Partition walls are being dismantled – in rooms as well as in minds.
- Flowing, open three-dimensional structures also break down the walls between people.
- Focussed work and relaxation can take place in turn.
- The working landscape promotes creativity and new ideas – creating free space, including for thinking.

A CULTURAL SHIFT IN THE WORLD OF WORK

the future works in landscapes

flow-work





Middle zone of the future.

- Unification of different potential uses in one landscape.
- Breaks and recreation are just as much of an option as informal opportunities to work and enter into discussions.
- Flowing, open three-dimensional structures open up space in our heads too so thoughts and ideas can flow.





the future works
in landscapes





Our solutions.

- Multifunctional furniture can be used for working as well as relaxing.
- Products offer space for collaboration but also for quiet retreat.
- Comfy and inviting design to match the flowing open three-dimensional structure.



ENVIRONMENTAL
TRANSFORMATION

from self to society

The idea of “sustainability” has changed over time and is now deeply rooted in corporate culture.

- Sustainability goes beyond environmental transformation.
- Responsibility applies to both the environment and society.
- It is no longer just about green products. Sustainability concerns materials, processes – and the design of office environments.

ÖKOLOGISCHER WANDEL

the future works for planet earth

FUTURE WORKS

work-wonders



We live for furniture that
makes new things possible.

SELMER

The image features the word "SELMER" in a bold, white, sans-serif font centered on a dark blue background. The letter "L" is uniquely stylized, with a red silhouette of a person sitting on its top bar and leaning forward, with their legs hanging down. The red figure is positioned such that it appears to be sitting on the letter itself, creating a visual pun on the brand name.